

Multiple Pathways to Graduation Building

On the Benson Polytechnic Campus



New MPG Building will serve diverse student needs

As part of the 2020 School Improvement Bond, a new Multiple Pathways to Graduation (MPG) building will be constructed on the Benson Polytechnic campus during the three year modernization of that school. The new 85,000 SF multi-story building will be located in the former Benson parking lot at the corner of NE Glisan and 16th Avenue. PPS Multiple Pathways to Graduation (MPG) programs will include Alliance at Benson and Meek, DART/Clinton, Teen Parent Childcare, Teen Parent Services and Reconnection Services and Center.

The new MPG building will include a 500 seat gym, Makerspace and host a number of CTE programs including Automotive, Manufacturing, Culinary, and Digital Media. This proposed LEED Gold building will incorporate principles of trauma informed design, one of several design approaches to create an environment that fully supports the diverse and specific needs of MPG programs and students.

In addition, new classroom spaces will be allocated within the modernized Benson Polytechnic High School campus to accommodate Pioneer High School, Portland Evening and Summer Scholars and Portland Virtual Scholars.

Multiple Pathways to Graduation (MPG) Mission

The Multiple Pathways to Graduation (MPG) Mission is to “provide educational options for all youth that empower, engage, and prepare them for college, work training, and global citizenship while serving as a vanguard for systemic educational change.”

Project Schedule

SUMMER 2019 - SUMMER 2022

Design & Permitting

Schematic Design/Design Development/
Construction Documents/Permitting

SUMMER 2022 - SUMMER 2024

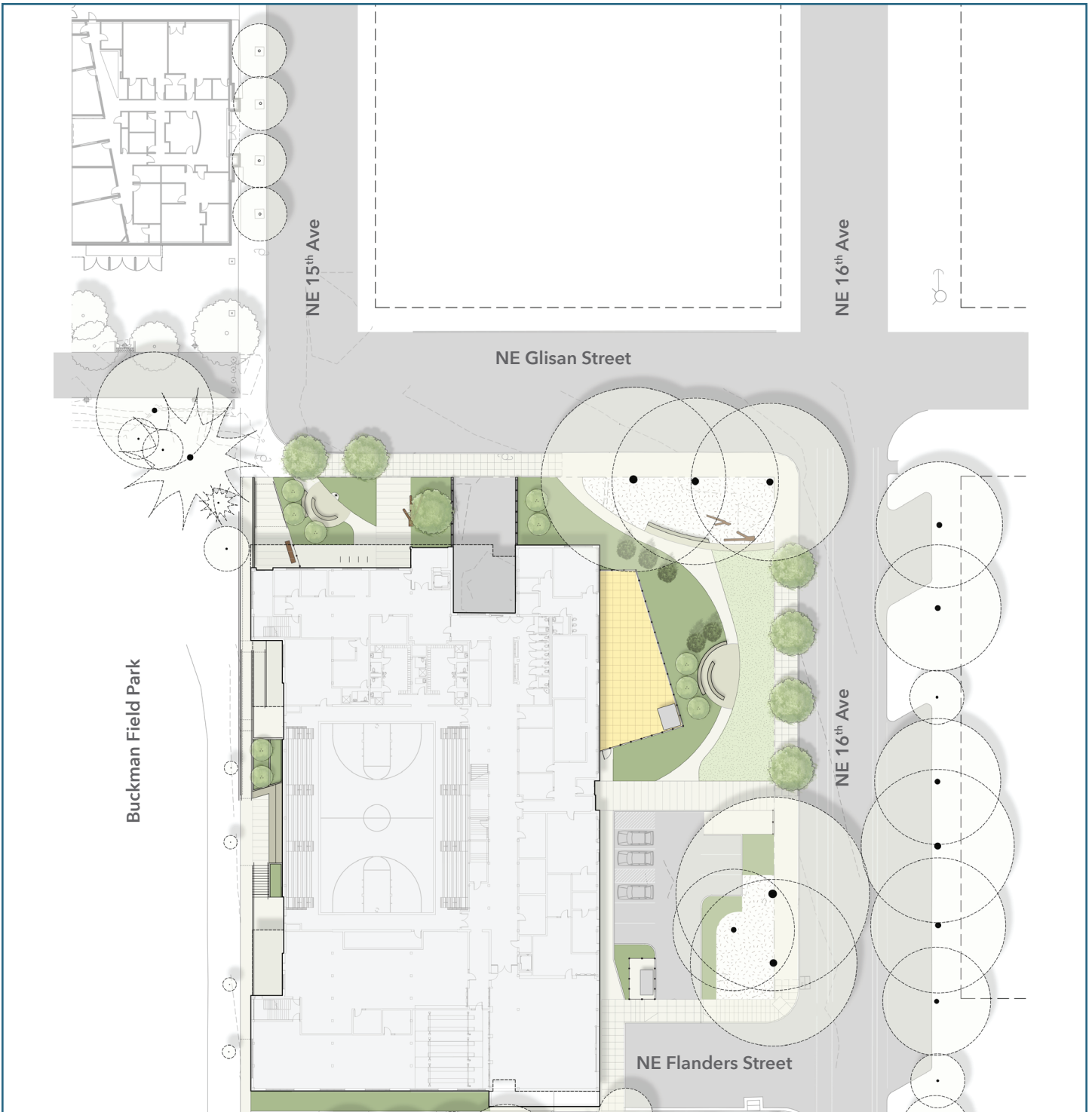
Construction

Students and staff will relocate
during Benson & MPG construction.

FALL 2024

Completion

New MPG Building opens
on the Benson Campus



MPG programs will relocate during construction

In order to increase safety and project efficiency, all students and staff will be temporarily relocated during construction: Pioneer High School programs will relocate to the Marshall Campus on SE 91st Ave. Alliance High School, Reconnection and DART/Clinton will relocate to the Kenton Campus. Evening & Summer Scholars will relocate to Grant High School. Starting in the 2021-2022 school year, PISA services for newcomers to the District will expand from one site at Benson to merge with newcomer services at Roosevelt & Leodis V. McDaniel (formerly Madison) High Schools.

BUILDING OUR FUTURE TOGETHER.

<http://BensonBond.pps.net> • Email: BHSMOD@pps.net • Phone: 503-916-2222
 f www.facebook.com/pps.homepage/ @PPSConnect

Portland Public Schools
 School Building Improvement Bond



Portland Public Schools is an affirmative action and equal opportunity employer